

The Medium

Volume 83

Issue 2

August 2010

Future Rotarian makes his debut!



Courtney & Lucas



Lucas Alb Ballauer



Lucas & Chris

Rotarian Courtney Ballauer and her husband Chris are the proud parents of a new son Lucas Alb Ballauer born on July 1st at 8:46 PM. Lucas was 5 lbs 1 oz at birth and 18.5 inches long. This future Rotarian is already sleeping 4-5 hours at night and eating every 2 hours during the day. We will be delighted to have him join us for his first Rotarian lunch!

Friendships Abound at Media Rotary



Jack Sproul and Fran Smith are just some of the good friendships to be made in the Media Rotary!

Who's who in Rotary now?



Rotarians gathered to hear new members Madeline Baio, Esquire from Rawle & Henderson and Louis Pavlovitch, CPA with Elko & Associates Ltd talk about their professional, personal and in-service lives. (See p2 for more)

Reception Committee

Program († speaker profiles on p2)

Date	Chairperson	Greeter	Speaker/Subject
August 05	Ellen Gorby	Tom Gibson	Classification talks by Joe Kleschick and Teresa Angarita
August 12	Rosemarie Halt	Jim Wallace	Anthony J. "Don" Donatoni, President Aqua Wastewater Management †
August 19	Tom Hibberd	Tom Gregory	Margaret A. Hendricks, Executive Director Delaware County Community Foundation †
August 26	Sally Holub	Karin Gustafson	Classification talks by Susan Garrison and Michael Garrison

This version of the Medium is brought to you by the generosity of Tom Gregory and Professional Duplicating. If you like this format, we will need to seek a sponsor to defray the expense of a full-color version.

Who's who? (continued from p1)



Madeline S. Baio

A Lawyer for over 20 years, Madeline is the Chair of Rawle & Henderson's Employment Law Department. She has counseled and defended clients in connection with employment claims and lawsuits before the

EEOC, PHRC and other state agencies as well as the State and Federal Courts.

Madeline has tried cases to verdict in federal and state court and is AV rated by Martindale-Hubbell. Recently she has focused on Estate Planning and Elder Law Practice. Her in-service activities include the Relay for Life in which she was a captain who earned honorable mention for donations raised in 2009. She has also done pro bono legal service for Delaware County Residents in conjunction with the Delaware County Bar.

Madeline said she joined Rotary for community involvement, to meet new friends, and most importantly she wanted to set a good example for her four children. She believes that it is important to teach our children to get involved, give back and think beyond themselves in order to help our future society flourish.



Louis Pavlovitch

Louis is a product of Lansdowne but credits his years at Drexel University with broadening his global outlook as a result

of the opportunities he had to interact with fellow students who represented a wide diversity of nations, cultures, races and economic standing. After joining Media's Elko & Associates, Louis followed the advice of Past Media Rotary President Al Elko to join our club. Louis is interested in getting to know the people in our community and feels the best way to do that is through the Rotary Club of Media. Louis has been a member since 2008.

Speaker Profiles

Anthony J. "Don" Donatoni, President of Aqua Resources Vice President & Regional General Manager of Aqua PA

Don has been with Aqua for over 15 years and was very instrumental in leading Aqua into the wastewater utility business including the Company's purchase of the Media sewer plant in 2001. He also laid plans for the creation of Aqua America's non-regulated subsidiary, Aqua Resources. Aqua Wastewater Management is the largest division of Aqua Resources and provides thousands of customers with water and wastewater contract services, including the Home Services program. In Don's capacity as VP of Aqua PA, he is responsible for providing water and sewer services to over 45,000 customers in Northeast and Central PA.



Margaret A. Hendricks, Executive Director of the Delaware County Community Foundation

DCCF's mission is to foster local philanthropy by assisting members of our local community to fulfill their charitable objectives through lasting legacies and to provide support to meet local needs that improve the quality of life for residents of Delaware County.

Since 2005 DCCF has raised over \$1,000,000 and given more than \$805,000 in grants to organizations and services across the County. Supported during the first three years with consultants and part-time help, DCCF hired our first full-time executive director in 2008 and has set a \$10,000,000 goal to secure the future for DCCF. On November 20, 2010 DCCF will hold its 5th Anniversary Gala at Springfield County Club.

Join us on Facebook

Go to our website:

www.MediaRotary.Org

and click on:



August Birthdays

Happy Birthday,
Rotarians! 

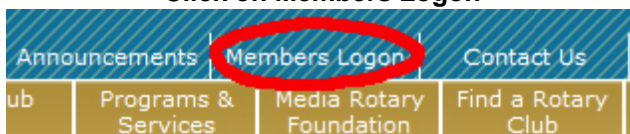
- 03 Katie Breslin-Duffus
- 04 Ellen Gorbey
- 07 Andrew Hunt
- 16 Nancy A. Geisel
- 18 George A. Albany, III
- 25 Eugene L. Kane

Who are you?

Please update your profile on our website:

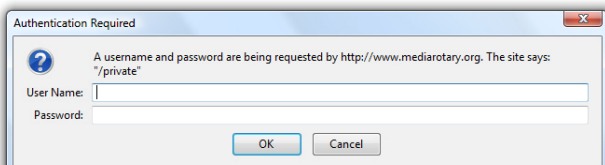
www.MediaRotary.Org

Click on Members Logon



Enter the User Name & Password

(see Jim Wallace, Madeline Baio or Virginia Falkenback for User & Password info)



Rotary Fun Facts



A wheel has been the symbol of Rotary since our earliest days. The first design was made by Chicago Rotarian Montague Bear, an engraver who drew a simple wagon wheel, with a few lines to show dust and motion.

The wheel was said to illustrate "Civilization and Movement." In 1922, it was decided all Rotary clubs should adopt a single design and in 1923, the present gear wheel with twenty-four cogs and six spokes was adopted. A group of engineers advised that the geared wheel was mechanically unsound and would not work without a "keyway" in the center of the gear to attach it to a power shaft. So in 1923 the keyway was added and the design which we now know was formally adopted as the official Rotary International emblem.

Know someone who would make a great Rotarian?
Bring them to a meeting!

Thoughts to Live By...

To handle yourself, use your head;
To handle others, use your heart.

Support our 50-50! The Pot is rising!

What's on the Menu?



Lunch Menu*

August 05

Hot: Chopped Sirloin w/Mushroom Gravy, Mashed Potatoes, Succotash

Cold: Chicken and Tuna on a Salad

August 12

Hot: Cajun Tilapia, Wild Rice, Green Beans and Pimentos

Cold: Chicken Caesar Salad

August 19

Hot: Ravioli w/Meatballs

Cold: Chicken and Tuna on a Salad

August 26

Hot: Chicken Breast w/Bread Stuffing, Roasted Red Bliss Potatoes, Glazed Carrots

Cold: Chicken Caesar Salad

* Menu may change without notice

Rotary International



Ray Klinginsmith
President, Rotary International 2010-2011

Ray Klinginsmith, a retired attorney from Kirksville, Missouri, USA, served as general counsel and professor of business administration for Truman State

A member of the Rotary Club of Kirksville and a Rotarian since 1961, Ray has served Rotary as district governor, chair of the 1998 Council on Legislation in New Delhi, and chair of the 2008 Los Angeles Convention Committee. He was a member of the RI Board of Directors from 1985 to 1987 and chaired its executive committee in 1986-87. Ray joined The Rotary Foundation Trustees in 2002, serving as vice chair in 2005-06, and was a member of the Future Vision Committee from 2005 to 2008. Ray is a Major Donor and a recipient of the Foundation's Citation for Meritorious Service and Distinguished Service Award.

Ray's wife, Judie, is a former elementary school teacher in Macon and Kirksville and a former consultant for the Child Development Assistant program at the Kirksville Area Vocational Center. Ray and Judie have two children, Leigh and Kurt, and three grandchildren, Morgan, Grant, and Sydney Perkins.

District 7450



Joan Batory
District 7450 Governor 2010-2011

Joan joined the Rotary Club of West Chester, PA (District 7450) in 1989 and served as club Sergeant at Arms, Program Chair and Director. Joan greatly enjoyed her 10 year membership in the club and values the friends she met there.

She transferred to the Rotary Club of Philadelphia when Mayor Rendell appointed her as the City Recycling Coordinator.

She received the Governor's Award in 2006; served on the District Rotaract Committee; as an Assistant Governor and liaison for District 7450 to the Rotary Water Resource Group.

Joan and her husband Joe have hosted 6 Rotary Ambassadorial Scholars. They are Paul Harris Fellows and members of the Bequest Society.

As District 7450 2010-2011 Governor, Joan is looking forward to energizing district clubs and committees, increasing membership through district sponsored events and promoting a district wide Day of Service and PolioPlus initiative in which all clubs can participate.

Delaware County DA Mike Green



Our Club was honored to have Delaware County District Attorney G. Michael Green as a speaker for our July 22nd meeting.

Over the course of his 30 year law career, (8 of which have been as DA), Green has come to value the contributions of the Rotary Club of Media and service organizations like it. He said *"It is important that we have service organizations in our county as well as all counties. If not, we lose attachment to one another whether that be business to business, family to family, community to community or nation to nation."*

Mr. Green described how the DA's office operates over 30 units which range from Senior Exploitation and Economic Crime to Anti-Terrorism and Homeland Security. Mr. Green's objective is the prevention, investigation and prosecution of crimes. He noted that his office is in constant communication with both Federal and surrounding local law enforcement offices due to Delaware County's proximity to Philadelphia and Wilmington. Pointing out these lines of communication and multi-unit task forces have resulted in numerous arrests and convictions during his term in office and have played a significant role in thwarting terroristic plots such as the recent case of "Jihad-Jane."

In Memoriam



The Club mourns the passing of Lynne Green on July 24, 2010.

Lynne, a member of Rotary for nearly 10 years, was born in Chicago and lived in Beverly Hills, California. She went to UCLA, where she met her husband, Barry, who passed away in 2007.

She was a Board Member of the Media Business Authority and a Board Member of the Media Rotary Club. She is survived by two sons, Scott and Brian Green, her daughter-in-law, Jennifer Holub Green and grandson, Phillip Green.

Club Members & Classifications

George A. Albany, III	Banking - Savings Bank	Andrew Hunt	Financial Advisor
Teresa Angarita	Construction Company	Peter E. Irish	Automotive Sales/Leasing
Madeline S. Baio	Elder Law	Eugene L. Kane	Medicine - Optometrist
Don Bak	Architect G.F.	Alex E. Karkenny	Stock Broker
Courtney Ballauer	Community Health	Denise C. Kerr	School Superintendent
Sylvia Bastani	Fundraising & Higher Education	Joseph Kleschick	Ship Building
Edward J. Beadle	Dentist	Terrance A. Kline	Law - Real Estate
Lewis B. Beatty, Jr.	Law - Probate	Pat Kosinski	Director - Non Profit
Jonathan Becker	Attorney - Estate Planing/Administration, Real Est	James Larsen	In-Home Senior Care
David L. Belanger	Library Administration	Barbara Laurenzi	Banking - Business Banking
Joseph S. Bodalski	Financial Consultant	Nicholas Lippincott	Law - Litigation
Michael J. Boettcher	Surf Shop - Retail Manufacturer	Peter A. Mardinly	Law - Tax
Valerie Bradley	Real Estate Inspection	Lori Markusfeld	Fundraising
Katie Breslin-Duffus	YMCA - Associate Executive Director	Joseph Maylish	Insurance Consultant
Max Brettschneider	Packaging	Cynthia Anne McGoff	Administration - Development
Martin Brian	Pharmacist	Carole S. McMahon	Home Health Care
Jeffry Cadorette	Commercial Realtor	Victor A. Menghetti, Sr.	Veterinarian
Michael J Campbell	Factotum	Bryan Messick	Banking
Chris Canada	Heating, Cooling, Plumbing	Jake Milunsky	Dentist
Anthony Cavaliere	Banking	Louis Pavlovitch	Accountant - CPA
Bruce Clark	Municipal Manager	David E. Pergrin	Honorary
Jim Clyma	Real Estate-Commercial	Ted Pleibel, III	Sign Maker
Scott Davidson	Advertsing Agency	Penelope Reed	Theater
William K. Davis	Community Planner	Dennis Rehrig	Medicine - Chiropractor
Kenneth Delmar	Plastics, Packaging	J. Nelson Rigby	Funeral Director
Robert L. Dimond	Veterans Affairs	Martin T Sarkees, Jr	Accountant
Al L. Elko	Accounting - CPA	George S. Saulnier	Law
Virginia L. Falkenbach	Computer, Web Designer	John J. Schlesinger	Non-Profit Administrator
Susan K Garrison	Lawyer	Dennis Slostad	Architect - Commercial
Walter Garrison		Fran Smith	Insurance Consultant
Nancy A. Geisel	Real Estate - Sales	Warren D. Smith	Dental Laboratory
Tom Gibson	Public Relations	Larry V. Smoose	Clergy
Ellen Gorbey	Salon/Spa	Jack Sproul	Laundry - Coin Op
Tom H. Gregory	Printing - Quick Copy	Linda E. Stone	Commercial Banking
William S. Gross	Retail - Men's Clothing	William B. Strine	Engineer - Consultant
Karin Gustafson	Advertising/Promotion	Hal Tausig	
Ted Hadley	Honorary	James W. Thomas	Auto Retail
Rosemarie Halt	Pharmacist	Greg Torre	Alarm Service
Rich Harding	Banking	John D. Vairo	Higher Education Administration
Stanley T. Hibberd	Casualty Insurance	Jim Wallace	Technology Services
O. Warren Higgins	Law - Retired	Lawrence Weathers, III	Auto Leasing, Sales, Service, Parts
Walton B. Hill	Education - Technical College	Kristen Welker	
Sally Holub	Magazine	Marvel Wilson, Jr.	Retired - Heating Oil Sales
John "Jack" Hontz	Education - Music	Jackie L. Woolfall	Marketing & Public Relations

Club Officers

President Andy Hunt			
President-Elect	Bryan Messick	Treasurer	David L. Belanger
Vice President	Jonathan Becker	Sergeant-at-Arms	Ted Pleibel, III
Secretary	Virginia L. Falkenbach	Past President	Ken Delmar